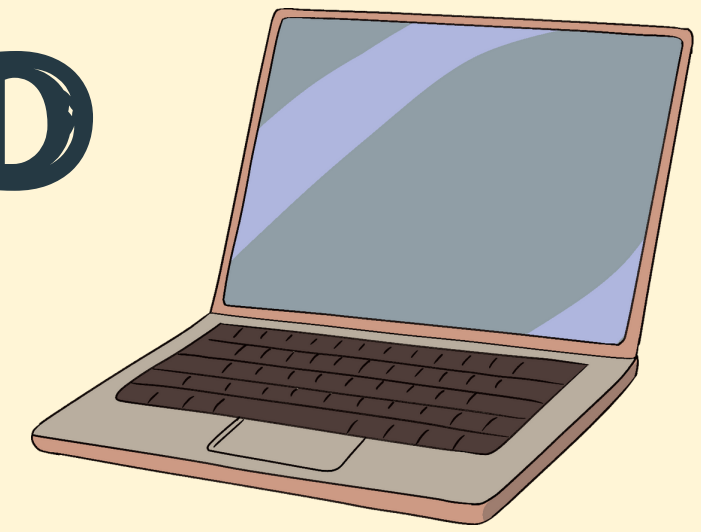




# DIGITAL INCLUSION LIBRARIAN SERVING DUAL-ENROLLED STUDENTS

Bethany Geiger (She/Her)  
Stanly Community College  
Albermarle, NC

# WHO ARE DUAL-ENROLLED STUDENTS?

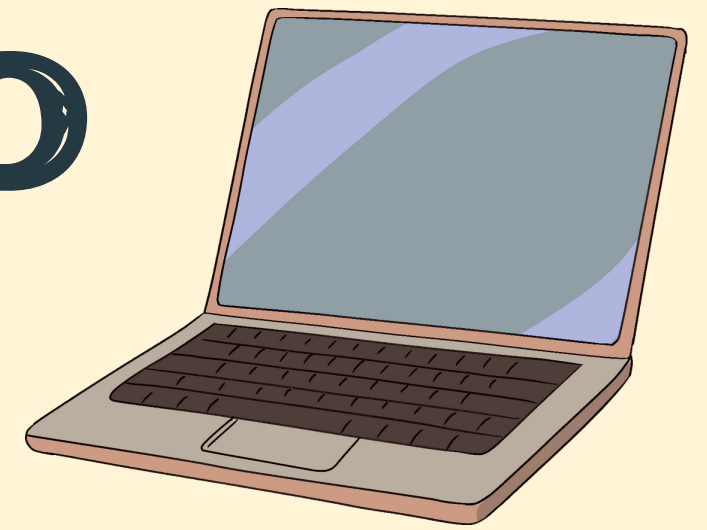


## High School Students Taking Tuition-Free College Courses

### Data

- In 2019-2020, 31% of all graduates enrolled in at least one dual enrollment course, primarily through CCP, during their high school years. (NCDPI)
- Stanly County had 821 high school students enrolled in 2021.

# WHO ARE DUAL-ENROLLED STUDENTS?



## CCP- Career & College Promise Program

North, West & South Stanly High Schools, Albemarle High School

## Cooperative Innovative High School Program

Stanly STEM High School, SCC Early College High School



# DEMOGRAPHICS



- Mostly Juniors/Seniors, but some Freshman and Sophmores
- Both highly-motivated students with strong academic records & students who struggle in traditional academic courses
- Students must apply to the program

# IDENTIFYING THE PROBLEM

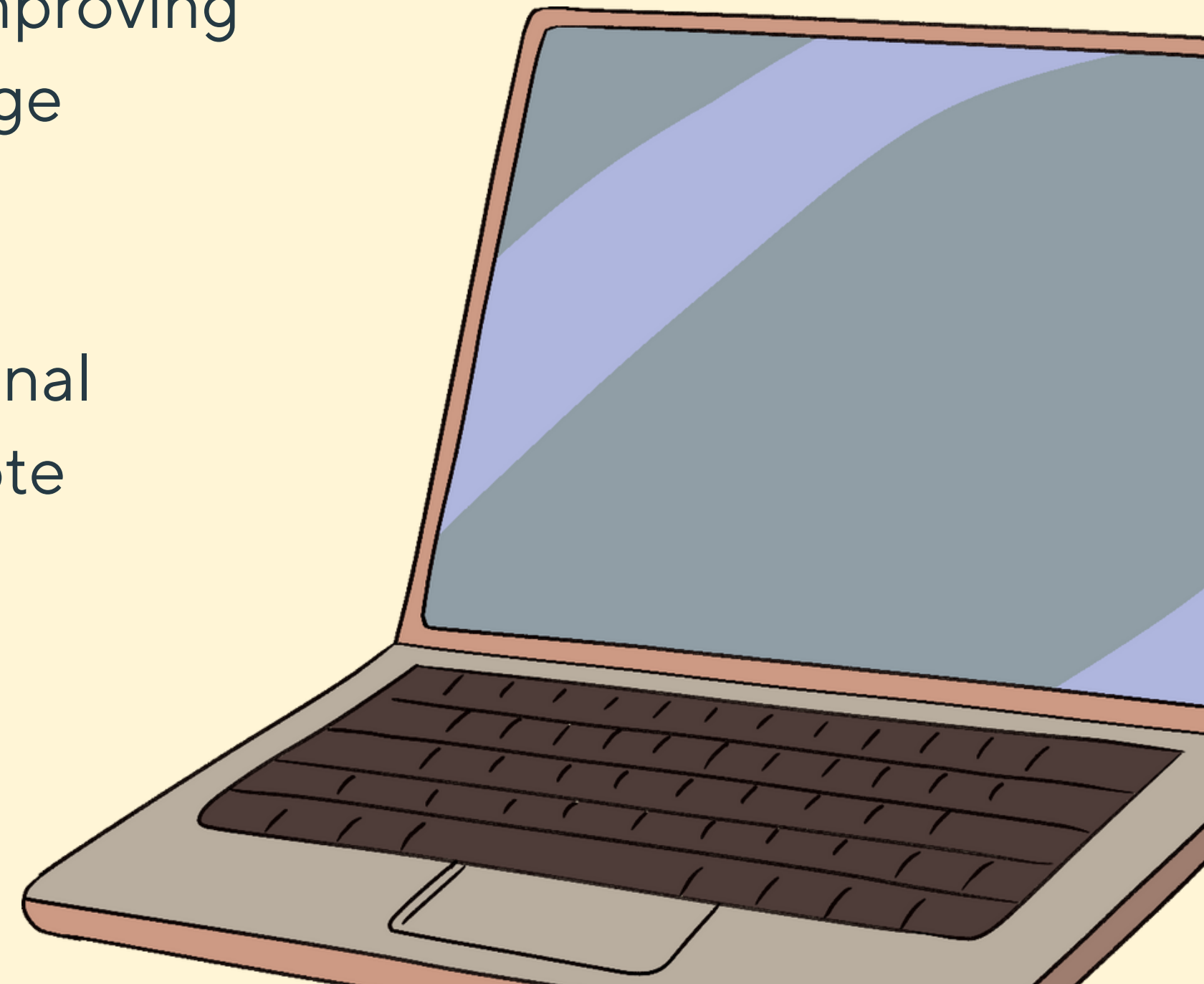
## CCP/EARLY COLLEGE STUDENTS ARE...

- Primarily Remote/Virtual
- New to the rigors of college-level research
- Have less access to in-person library orientation and information literacy sessions



# THE SOLUTION

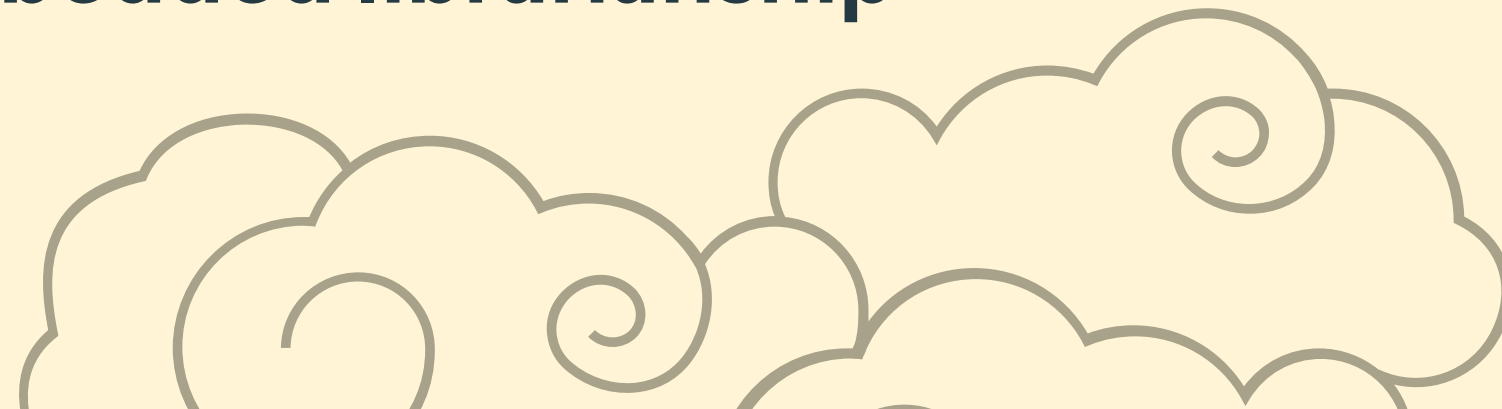
- Through an SLNC Adapts Grant, Stanly Community College was able to fund a term-limited Digital Inclusion Librarian position with the goal of improving outreach to Early College and Career & College Promise students
- The grant also allowed for purchase of additional Chromebooks and internet hotspots for remote learners



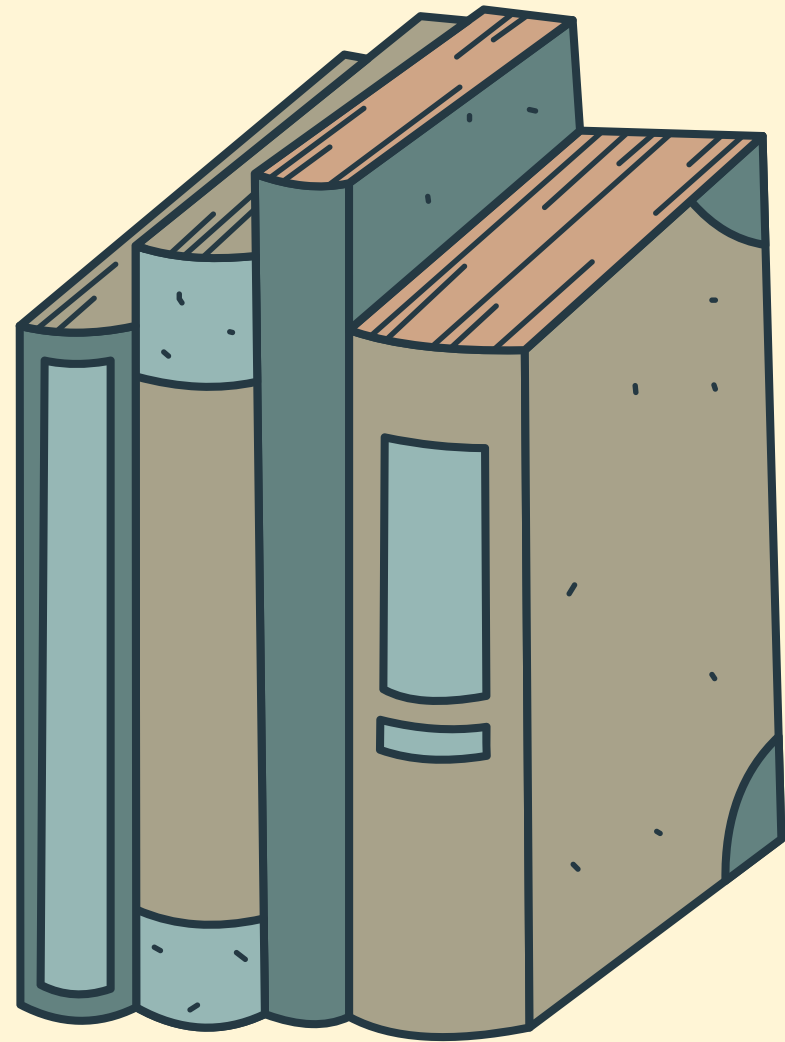
# THE DIGITAL INCLUSION LIBRARIAN

## GOALS:

- In-person outreach to high schools for information literacy instruction.
- Curating and updating the library's website hosted through LibGuides
- Networking with faculty to assess digital inclusion needs such as embedded librarianship



# PROGRAM STRUCTURE



## Collaboration!

- Program Coordinators/ Liaisons
- School Librarians/Media Coordinators
- Digital Learning Lab Instructors
- School Guidance Counselors

## Regular In-Person Outreach

- Visited each School once weekly for 2-3 hours.

## Increased Virtual Presence

- Embedded Librarian Module
- Libguides





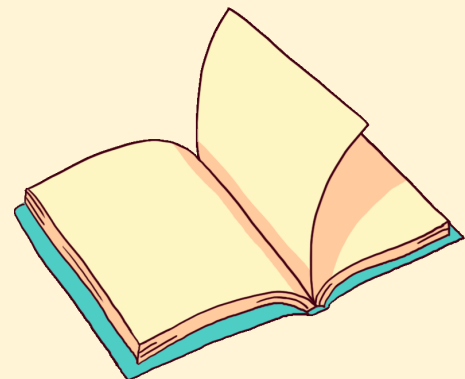
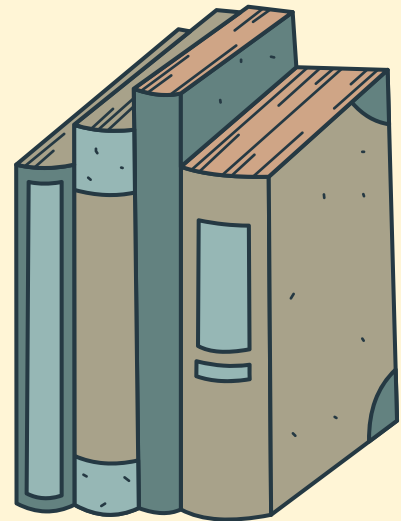
The image features a teal background with four stylized yellow clouds. Each cloud has a thick black outline and contains several smaller, swirling black outlines, giving them a whimsical, cartoonish appearance. The clouds are positioned in the top-left, top-right, bottom-left, and bottom-right corners of the frame. Centered in the middle of the image is the word "SUCCESSES!" in a bold, dark blue, sans-serif font with a slight shadow effect.

**SUCCESSES!**

# SUCCESS & ACHIEVEMENTS



- Increased awareness of both physical and digital library resources
- Increased awareness of on-campus support services
- Familiar connection increased student research help requests
- Positive ACRL survey feedback from students
- Positive feedback from faculty

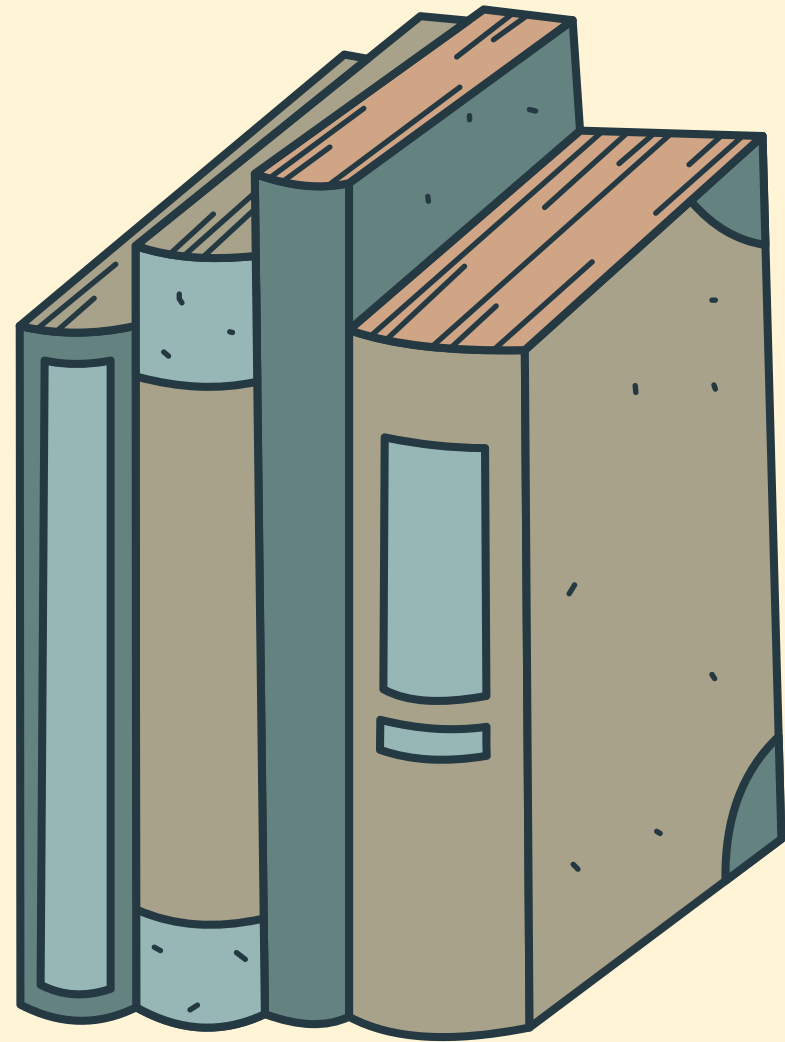




# **PROBLEMS & CHALLENGES**



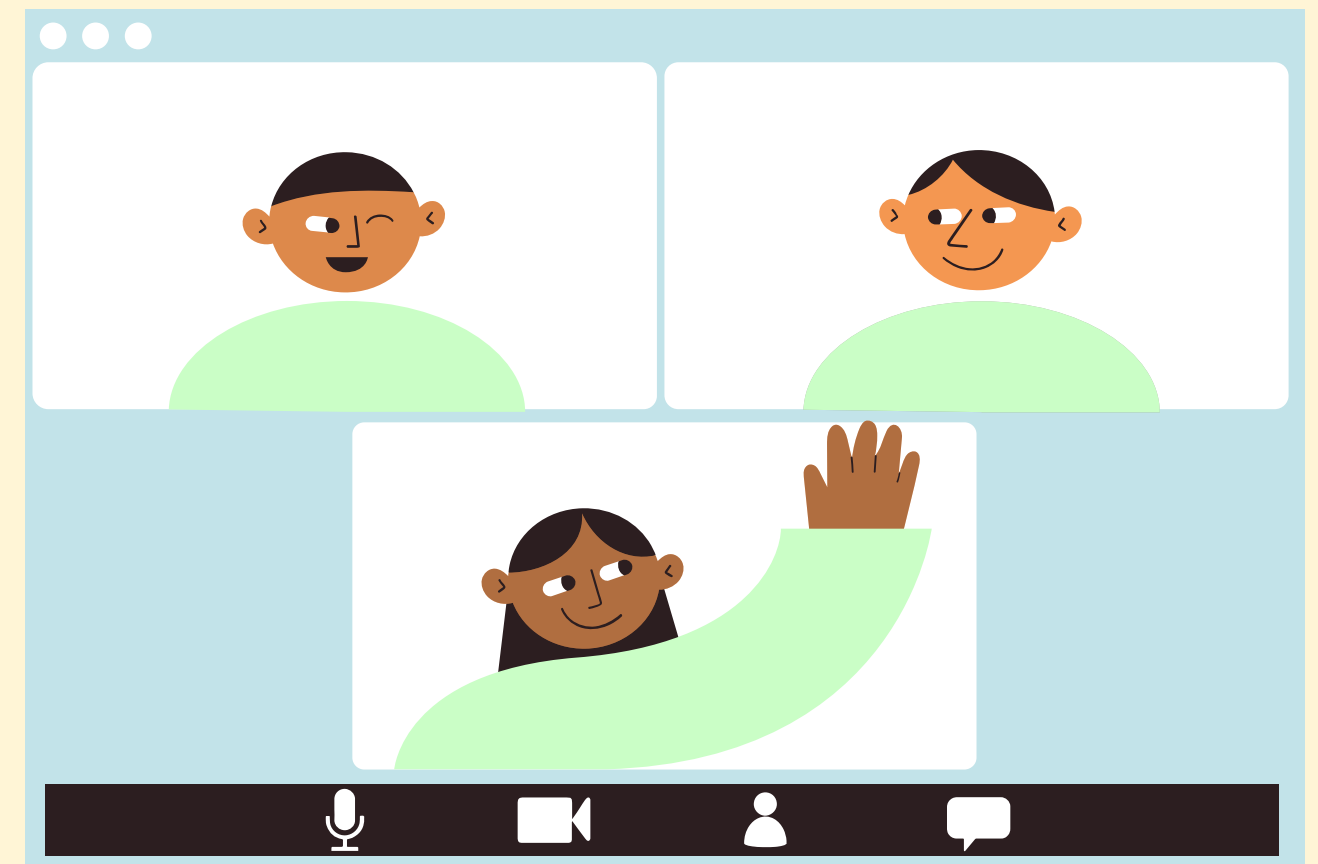
# POTENTIAL CHALLENGES



- **Our CCP Students are not required to be on high school campus, except to attend regular high school courses**
- **Group variety- various ages, taking all different courses, varying exposure to library resources**
- **Motivating students without grades**
- **Getting teacher and admin support**
- **Physical space and technology resources**
- **Funding- What to do after grant period?**

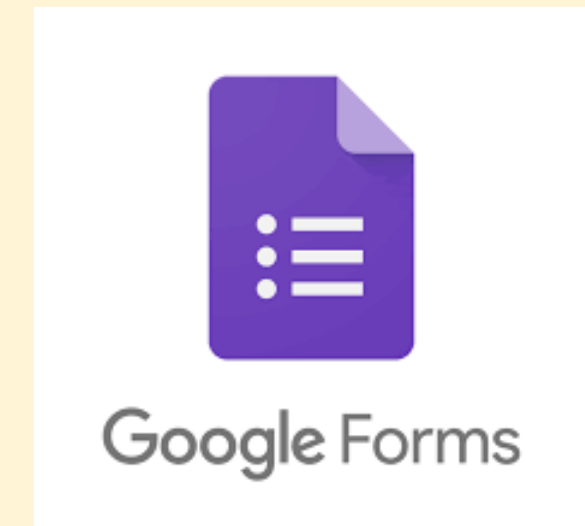
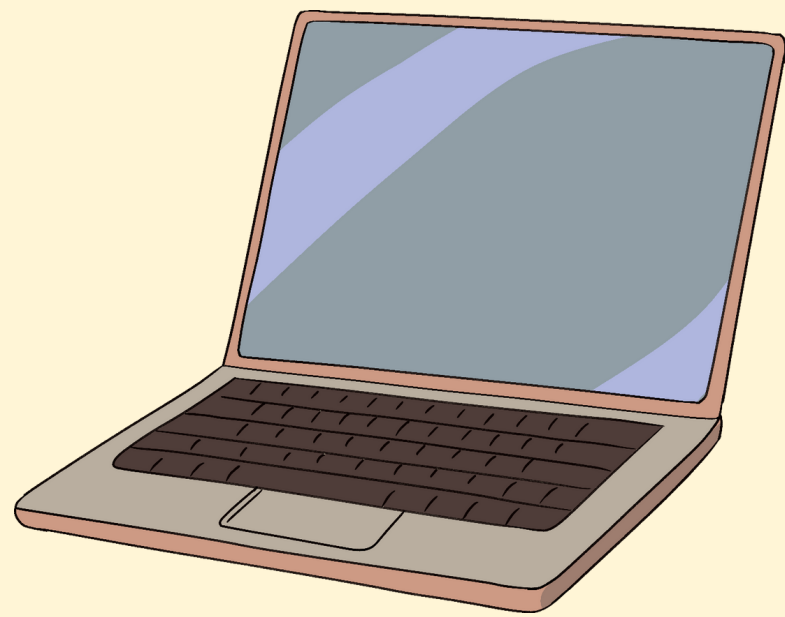
# REACHING STUDENTS OFF CAMPUS

- Embedded Librarian Module
- Self-Paced Virtual Library Orientation
- Libguides
- Schedule Adjustments
- Dropout Detective



# ENGAGING INFORMATION LITEACY

- Padlet, nearpod, ahaslides, escape rooms



- Bribes- Stickers, Candy, & Competition






**THANK YOU!**



**ANY QUESTIONS?**

Contact me:

[bgeiger3353@stanly.edu](mailto:bgeiger3353@stanly.edu)



# References

Cooperative Innovative High Schools | NC DPI. (n.d.). Advanced Learning and Gifted

[Education. https://www.dpi.nc.gov/students-families/enhanced-opportunities/advanced-learning-and-gifted-education/cooperative-innovative-high-schools](https://www.dpi.nc.gov/students-families/enhanced-opportunities/advanced-learning-and-gifted-education/cooperative-innovative-high-schools)

North Carolina Department of Public Instruction. (n.d.). Career and

[College Promise. Advanced Learning and Gifted Education.](https://www.dpi.nc.gov/students-families/enhanced-opportunities/advanced-learning-and-gifted-education/career-and-college-promise)

<https://www.dpi.nc.gov/students-families/enhanced-opportunities/advanced-learning-and-gifted-education/career-and-college-promise>

North Carolina Department of Public Instruction. (2021). Report to the

North Carolina General Assembly: Career and College Promise.

<https://www.ncleg.gov/documentsites/committees/JLEOC/Reports%20Received/2021%20Reports%20Received/Evaluation%20CIHS%20Programs%20and%20Career%20&%20College%20Promise%20Program.pdf>